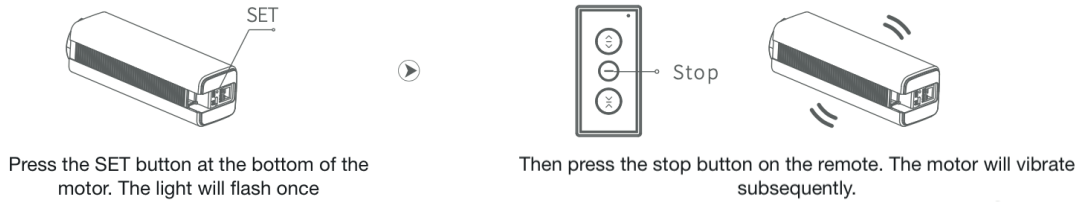
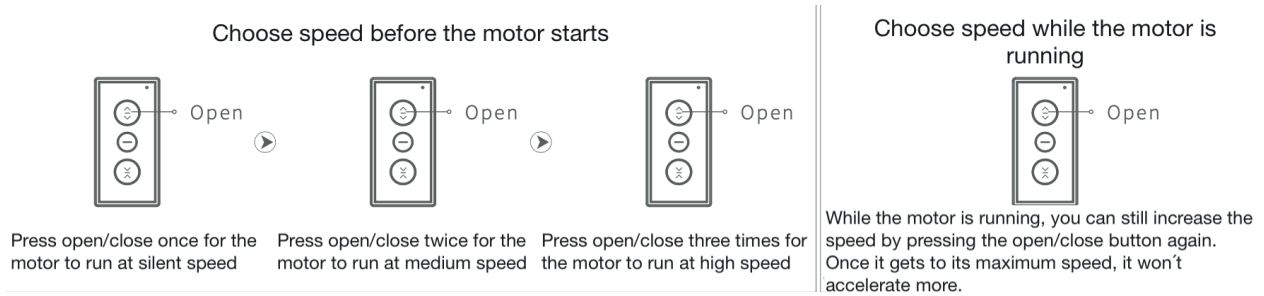


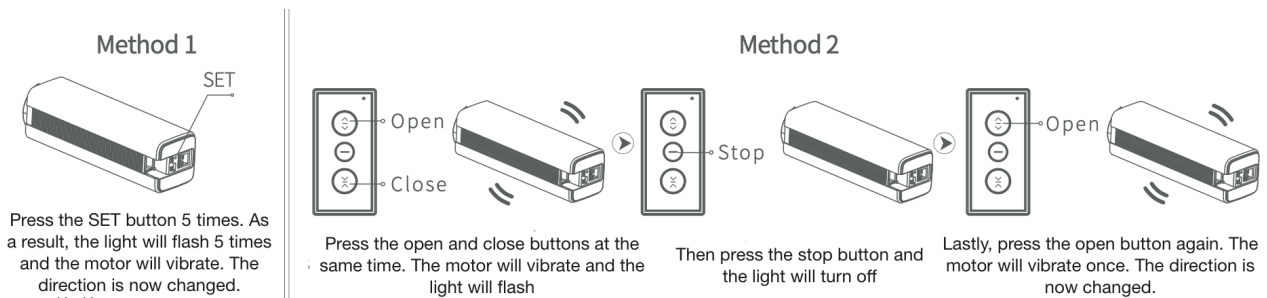
Motor and remote control synchronization: follow the steps shown in the image to synchronize the motor with the remote control. Once done, press the open button and let the carriers travel all the way to the end of the track. Once they get there, the motor will register that position as the opening position (it will vibrate accordingly). Once the carriers have stopped moving, press the close button so the motor can register the closing position as well.



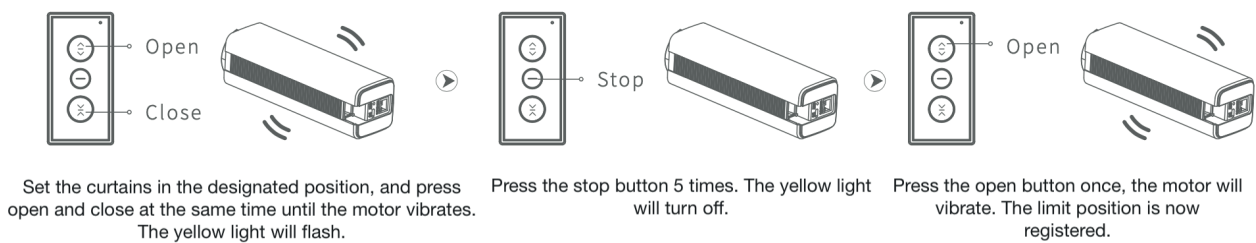
Speed adjustment of motor: the speed can only be controlled when you are using the remote control or the SmartTuya app. Please refer to the image below for more details.



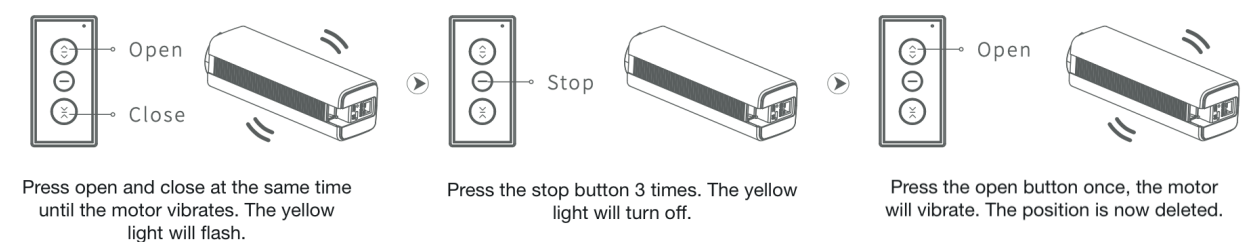
Change the direction: if the activity of the motor does not match the intended outcome from pressing a given button of the remote control (example: the curtains open when you press 'close' on your remote control), you can change that by doing as follows:



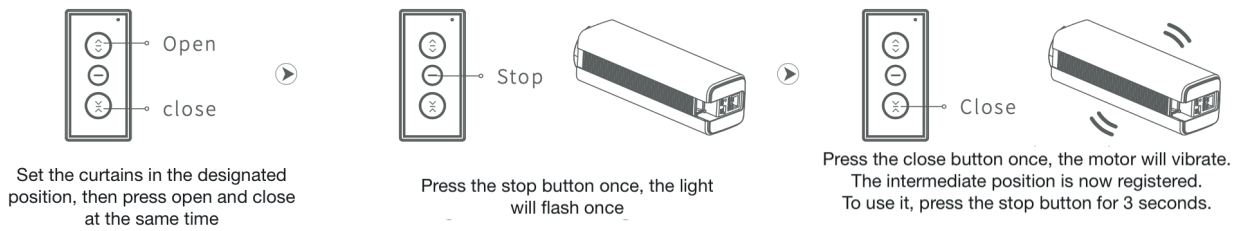
Set a limit position of opening/closing



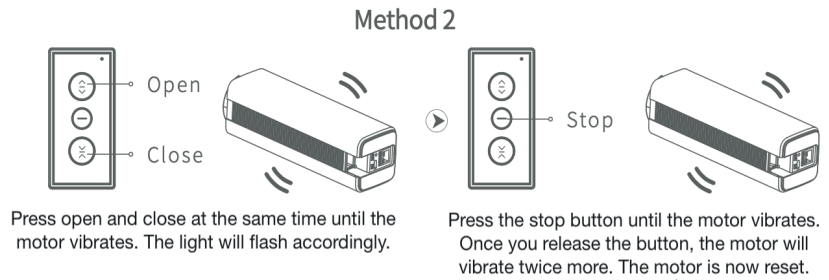
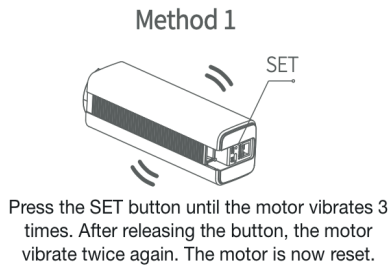
Delete a limit position of opening/closing



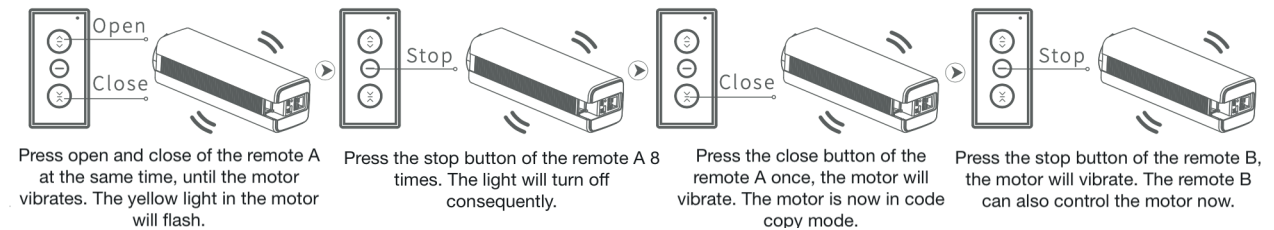
Set an intermediate position



Factory reset



Remote copy code: if you need two remote controls to work with the same motor, you can follow the indications below. Be aware that remote A refers to the remote control that is already synchronized with the motor, and remote B is the second remote control that you want to synchronize.



4. Do's and Don'ts

- This product is only for indoor use, do not use it in humid environment or outdoors.
- Do not splash water or other liquids on the product.
- Do not place the product near a heat source.
- The motor wires cannot be replaced. If the wires are damaged, the appliance should be abandoned.
- Do not try to repair the motor by yourself if any fault occurs during usage.