



ACRIMO

Curtains technology

FabTrack® L100

EXTENDABLE MOTORIZED
CURTAIN TRACK

User Manual



Please read the user manual carefully before using the product

Encuentra este manual de usuario en español en:
Sie dieses Benutzerhandbuch auf Deutsch unter:
Trouvez ce manuel d'utilisation en français sur:
Trova questo manuale utente in italiano su:

acrimotracks.com

Product Description

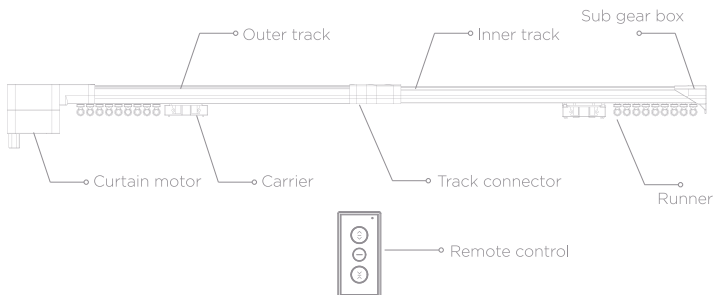
The Acrimo extendable motorized curtain track kit includes the extendable track, the motor, the remote control and all the components to install it.

The motor needs to be plugged in to work. The track can be controlled using the remote control, the mobile app TuyaSmart or smart speakers. The motor can also be activated manually by gently sliding the curtains a few centimeters.

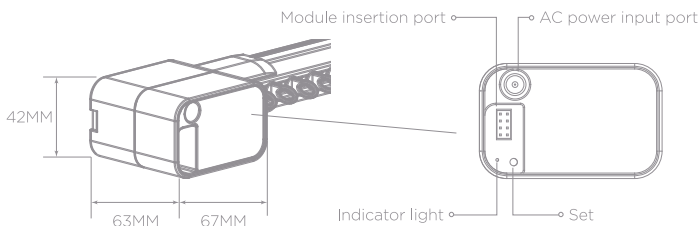
	Specifications		
	1 m Kit	1.5 m Kit	2.2 m Kit
Suitable for window sizes	1.0-1.6M	1.5-2.6M	2.5-4.0M
Shortest product length	0.93M	1.43M	2.13M
Package sizes	0.05*0.07*1.02M	0.05*0.07*1.52M	0.05*0.07*2.22M

* Power cable included.

Extendable track



Motor

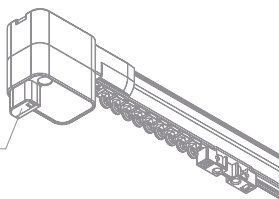


• Smart module

Insert the smart module to unlock smart control capabilities.



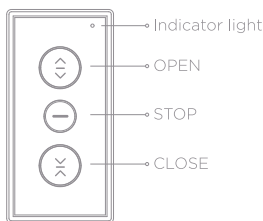
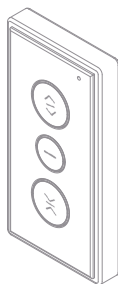
Smart module



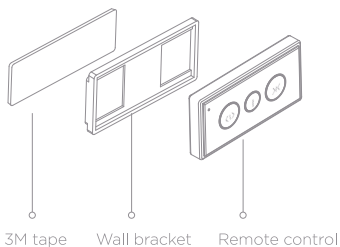
Remote control

The remote control can be installed on the wall if desired and has one channel available to register up to 40 tracks under the control distance (40m).

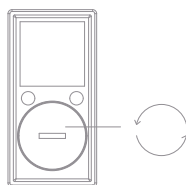
Product name: Remote control
Type no.: HUNTER 101
Frequency: 433.92MHz
Channel: 1
Battery: 1pc, 3V CR2032
Distance: 40m
Fix: Magnetic bracket and 3M tape
Dimension: 66mm*33mm*10mm



• Wall installation



• Battery replacement

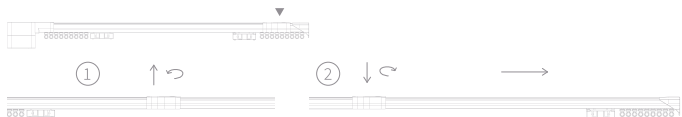


Rotate the cover to change battery
Battery type: CR2032

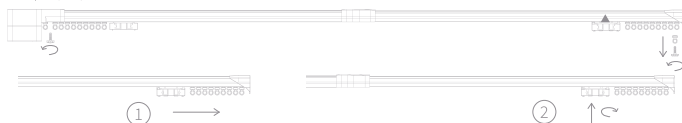
Length adjustment

Please follow these instructions to adjust the extendable track to the desired length.

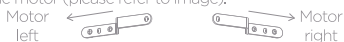
1. Loosen the track connector screws, extend the track to the appropriate length, and tighten the screws when done.



2. Pull carriers to both ends of the track, and then tighten the carrier screws. If your system is side opening, move the carrier to the end where the motor is and tighten the carrier screw.
3. Unscrew the gear boxes on both sides to add or remove runners (standard number of runners is 10pcs/m).

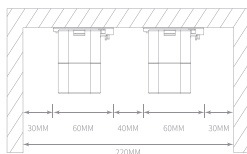
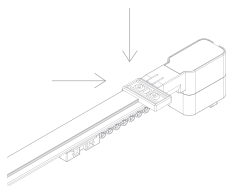
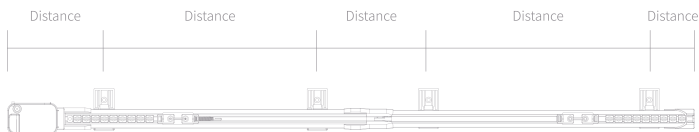


4. Assemble the carriers' arms so they overlap. If your system is side opening, the orientation of the arm will depend on the position of the motor (please refer to image).



Installation

To measure the position of the ceiling brackets on the ceiling, we recommend installing them on the track first. There must be a bracket on each side of the track connector, and also one next to each gear box. Lastly, use additional ceiling brackets to ensure a maximum distance of 1 meter between them.

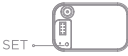


Mark the position of the brackets on the ceiling. Now you can uninstall them from the track and install them on the ceiling. Please leave enough space around the track to ensure correct operation (refer to figure above).

Remote control synchronization

The remote control is paired with the motor in our factory. In case the motor does not follow the orders of the remote control, please follow these instructions.

Remote control - motor synchronization



Press SET button once.

Note: the device will stop the matching process if there is no further activity in 10s.



Short press STOP in the remote control once. The motor will vibrate, concluding the synchronization.

Delete remote control - motor synchronization



Press OPEN and CLOSE on the remote at the same time. The motor will vibrate.



Press STOP 7 times.



Then, press OPEN or CLOSE. The motor will vibrate, concluding the deletion.

Direction change

Method 1



Press SET button 5 times. The motor will vibrate, concluding the change of direction.

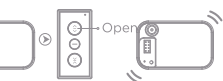
Method 2



Press OPEN and CLOSE on the remote at the same time. The motor will vibrate.



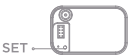
Press STOP.



Then, press OPEN again. The motor will vibrate, concluding the change of direction.

Factory reset

Method 1



Long press the SET button until the motor vibrates 3 times. After releasing the button, the motor will vibrate twice more, concluding the reset.

Method 2

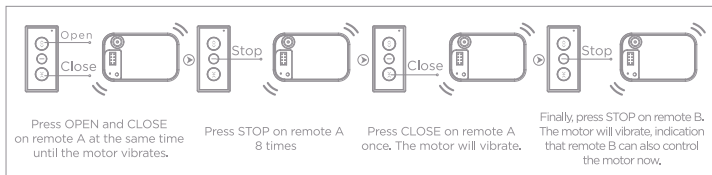


Press OPEN and CLOSE at the same time until the motor vibrates.



Then, long press STOP until the motor vibrates again. After releasing the button, the motor will vibrate twice more, concluding the reset.

Remote copy code



Description of motor indicator

1. When the motor is powered, the indicator light flashes twice.
2. Code matching. Short press SET button (the indicator light will flash once), and short press the STOP button in the remote control. The indicator light remains on for 10 seconds, indicating that the code matching is successful.
3. Direction change. Short press SET button 5 times (the indicator light will flash 5 times). The motor will vibrate, concluding the direction change.
4. Delete limit. Long press the SET button (the indicator light will stay on) until the motor vibrates, concluding the deletion.
5. Restore factory settings. Long press the SET button until the motor vibrates 3 times (the indicator light will stay on). After releasing the button, the motor will vibrate twice more, concluding the reset.

DOS and DON'TS

- Please unplug the motor before plugging the smart module.
- This product is only for indoor use, do not use it in humid environments or outdoors.
- Do not splash the product with water or other liquids.
- Do not place the product near a heat source.
- The motor wires cannot be replaced. If they are damaged, the motor must be entirely replaced by a new one.
- Do not try to repair the motor if any fault occurs during usage.

Technical parameter

Product name	Mini Smart Curtain
Product type	MAGE10D
Nominal torque	12V
Rated power	12W
Protect Grade	IP20
Running speed	12CM/S
Working temperature	-20°C-55°C
Working humidity	0-95%RH
Working humidity	Class B

Hazardous substances

Part Name	Hazardous Substance					
	Pb	Hg	Cd	Cr(VI)	PBB	PBDE
Plastic parts	○	○	○	○	○	○
Aluminium	○	○	○	○	○	○
Other internal structural metals	X	○	○	○	○	○
Motor PCBA	X	○	○	○	○	○
RemotePCBA	○	○	○	○	○	○
Packaging	○	○	○	○	○	○
Other part	○	○	○	○	○	○

This table is prepared according to the regulations of SJ/T 11364-2014.

○ :Indicates that the content of the harmful substance in all homogeneous materials of the component is below the limit requirements specified in GB/T 26572-2011;

X :Indicates that the content of the harmful substance in at least one homogeneous material of the component exceeds the limit requirements specified in GB/T 26572-2011.



The number on this label indicates that the environmental protection service life of the product under normal use is 10 years. Some parts have an environmental protection service life label, and the environmental protection service life will be defined by the number on the label.

INSTRUCTIONS ANNEX



ASSEMBLY RECOMMENDATIONS:

For optimal installation and performance of the curtain track, please follow these instructions carefully. These procedures will help prevent possible jumps or unwanted noises. Detailed video instructions are available at www.acrimotracks.com

Track Length Adjustment:

1. Completely remove the screw from the track joint.
2. Extend the track until it reaches the desired length.
3. Reinsert the joint screw and tighten it 10 full turns using the hex Allen key.
4. Check that the track is properly secured. If it is not, continue tightening half a turn at a time until it is firmly fixed.

Master Carrier Adjustment (For Center Opening – 2 Curtains):

1. Remove the two screws from the main master carrier.
2. Slide both master carriers to the ends of the track.
3. Reinsert the screws into the main master carrier and tighten them 13 full turns with the Allen key.
4. Check manually that both master carriers slide smoothly and symmetrically along the track. If one does not move properly, slide both master carriers back to the ends of the track and tighten the main master carrier a bit more (half a turn each time) until the main carrier properly pulls the secondary one.

Ceiling Brackets:

1. Attach the brackets to the track. Position them near the joint and at the ends (at least three brackets), ensuring no more than 1 m between brackets.
2. Hold the track with the brackets in place and mark the drilling points.
3. Install only the rear screw of the bracket first to make the process easier.
4. If you wish to reinforce the support, you can also install the front screw, but you will need to separate the brackets from the track first. If you need to remove the bracket, do so using the included plastic wedge to avoid scratching the track.

Find video tutorials, manuals
and technical support on
acrimotracks.com



K01.05.006V2